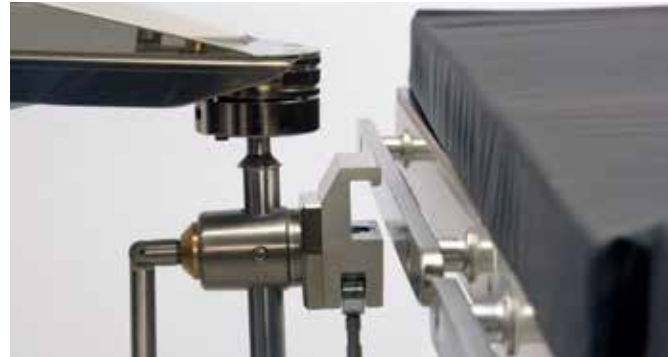




REISON
MEDICAL

Specialists in OR-Accessories



ABOUT US

Reison produces and supplies a wide range of accessories for the operating room. We work exclusively with premium products that offer high customer value and meet every customer requirement. For us at Reison, safety, quality and usability are paramount. We constantly strive to protect and improve the highest quality in all our products. In every detail our products deliver what they promise.

QUALITY

Quality is an integral part of Reison corporate principles. These principles guide our actions to deliver products and services that are safe, compatible, and preferred. Our company and our products meet the requirements for MDR and FDA. At Reison, our commitment is to never compromise the safety, conformity and quality of our products and services.

HISTORY

Reison was founded in the 1960s as a manufacturer of operating tables and has since then created a proud history in patient care. Our 50 years of experience is reflected in a wide range of premium products that offer high customer value and meet all customer needs.

OUR CORE VALUES

Our core values serves as a guiding principle to support our vision. At all times we strive to over perform them!



SIMPLICITY

Simplicity is paramount in all our business relations. Our success is based on making life simple for our great partners, today and tomorrow.



SERVICE AND SUPPORT EXCELLENCE

Working with us means, having someone to contact at all times. To always get swift and accurate answers. We understand the importance of fast and accurate deliveries.



SWEDISH CRAFTMANSSHIP

For us, manufacturing is a passion. All our products are manufactured in Sweden. Safety, quality and usability are paramount in all products and everything we do.

CONTENTS

SURGICAL ARMBOARDS	Page 4
ARM SURGERY TABLES	Page 10
SURGICAL CLAMPS	Page 13
INSTRUMENT TABLES	Page 17
STRAPS & FIXATION	Page 19
SUPPORTS	Page 23
MISCELLANEOUS ACCESSORIES	Page 36

SURGICAL ARMBOARDS

The surgical armboards from Reison gives you the support needed, during all kinds of operations. The surgical armboards is controlled with a simple one-handed grip, making them ergonomic, flexible and functional. Each joint unit is adjusted with a special method that makes Reison's armboards completely unique and the joint ball and the joint head a perfect fit together.





Armboard with clamp, 10mm spacer, flat plate

Armboard with one hand balljoint release with a flat plate. Standard clamp (part no. 10019) with hook-on function, 10mm spacer, is included.

Note: The product can also be ordered with 30mm spacer:
Part. no: 10-380-M

Recommended cushions are:
10-181, Flat medisoft comfort cushion
10-182, U-shaped medisoft comfort cushion

Part no 10-387
Length 605mm
Height 22 cm
Width 18 cm
Weight 4,3 kg
Material Stainless steel, Aluminum, Brass

Fastening rail (EUR): 10-387
Fastening rail (US): 10-387-US
Fastening rail (UK): 10-387-UK



Armboard excl. clamp, curved plate, short length with long post

Arm support designed to support the arms of a patient at different surgical procedures. The arm support is very easy to adjust in any desired position and is maneuvered by just one hand.

Recommended clamps: 10-304 or 10-305
Recommended cushion: 10-382-K, U-shaped medisoft comfort cushion, short

Part no 10-380-KL
Length 450 mm
Height 50 cm
Width 18 cm
Weight 3,1 kg
Material Stainless steel, Aluminum



Armboard with clamp, 10mm spacer, curved plate

Unique Armboard with "one hand" balljoint release. A standard clamp with hook on function is included (part no. 10019). For "beach chair" position, we refer to our Armboard 10-387 with Reison rotatable clamp 10-307.

Clamp for US and UK accessory rail are available:
10-380 (Eur 25×10 mm)
10-380-US accessory rail
10-380-UK accessory rail

Recommended cushions (not included):
10-381, Flat, moulded polyurethane foam
10-382, U-shaped, moulded polyurethane foam
10-382-H, U-shaped medisoft comfort cushion
10-382-HT, U-shaped medisoft comfort cushion, Extra high (70 mm)

Part no 10-380
Length 605 mm
Height 140mm (bar for height adjustment)
Width 18 cm
Weight 4,3 kg
Material Stainless steel, Aluminum

Fastening rail (EUR): 10-380
Fastening rail (US): 10-380-US
Fastening rail (UK): 10-380-UK



Armboard with clamp, 10mm spacer, curved plate

Armboard with a one hand balljoint release. This Armboard has a long post and hence it can be used for operating tables with an extra high mattress.

A standard clamp (10019), 10mm spacer, with "hook on" function is included. For "beach chair" position, we refer to Reison Armboard part no: 10-387.

Clamp for US and UK accessory rail are also available:
10-380 (Eur 25×10 mm)
10-380-US accessory rail
10-380-UK accessory rail

Recommended cushions (not included) are:
10-381, Flat, moulded polyurethane foam
10-382, U-shaped, moulded polyurethane foam
10-382-H, U-shaped medisoft comfort cushion

10-382-HT, U-shaped medisoft comfort cushion, Extra high (70 mm)

Part no 10-380-L
Length 605mm
Height 40cm
Width 18 cm
Weight 4,7 kg
Material Stainless steel, Aluminum

Fastening rail (EUR): 10-380-L
Fastening rail (US): 10-380-L-US
Fastening rail (UK): 10-380-L-UK



Armboard with clamp, 10mm spacer, curved plate, radiolucent

This armboard is designed for use with a C-arm image intensifier. It has a radio translucent top, making it perfect for e.g fluoroscopy of the patient´s arm.

It is also useable as a traditional arm board to put a drip needle into the arm of the patient. A standard clamp is included (see picture)

Recommended cushions (option):
 10-381 Flat, moulded polyurethane foam
 10-382 U-shaped, moulded polyurethane foam
 10-382-H U-shaped medisoft comfort cushion
 10-382-HT U-shaped medisoft comfort cushion, Extra high (70 mm)

Part no 10-385
 Length 605 mm
 Height 32cm
 Width 17 cm
 Weight 2,2 kg
 Material Stainless steel, Aluminum, Polycarbonate

Fastening rail (EUR): 10-385
 Fastening rail (US): 10-385-US
 Fastening rail (UK): 10-385-UK



Armboard with clamp, 10mm spacer, curved plate, short length

This Armboard is similar to part.no 10-380 but this is a short version. Standard clamp with "hook on" function is included. Length 455 mm. Available with extended post for seated position (Armrest). Clamp for US and UK are available.

Recommended cushions (option):
 10-382-K U-shaped medisoft comfort cushion, short

The Armboard can be used as "Armsupport" in seated position. Extra long post (+100 mm) is available on request.

Part no 10-380-K
 Length 510mm
 Height 22 cm
 Width 18 cm
 Weight 3,8 kg
 Material Stainless steel, Aluminum

Fastening rail (EUR): 10-380-K
 Fastening rail (US): 10-380-K-US
 Fastening rail (UK): 10-380-UK-K



Comfort Cushion for Armboard high

Comfort (viscolastic) cushion in black (antistatic). Velcro fastening. Extra padding. Thickness 8 cm. Suitable for: 10-380, 10-380-SX, 10-380-L and 10-387

Part no 10-382-HT
Length 61 cm
Height 8 cm
Width 18 cm
Weight 0,5 kg
Material Antistatic fabric, Foam, Slow recovery



Comfort Cushion for Armboard medisoft

Comfort (viscolastic) cushion in black (antistatic). Velcro fastening. Thickness 4 cm

Suitable for 10-380, 10-385 and 10-387.

Part no 10-382-H
Length 61 cm
Height 4,1 cm
Width 16 cm
Weight 0,3 kg
Material Antistatic fabric, Foam, Slow recovery



Comfort Cushion for Armboard medisoft short

High comfort cushion (viscolastic) for 10-380-K, concave. ColReison: black (antistatic).

Part no 10-382-K
Length 45 cm
Height 6,5 cm
Width 16 cm
Weight 0,2 kg
Material Antistatic fabric, Foam, Slow recovery



Comfort Cushion Medisoft Flat

High comfort (viscolastic) cushion with flat bottom and flat surface. With Velcro fastening. For Reison Armboard with a flat plate. Thickness 4,5 cm

Part no 10-181
Length 61 cm
Height 4,5 cm
Width 18 cm
Weight 0,32 kg
Material Antistatic fabric, Foam, Slow recovery



Comfort Cushion Medisoft U-shaped

High comfort (viscolastic) cushion with flat bottom and curved surface. Black (antistatic), with Velcro fastening.

For Reison Armboard with a flat plate.
Thickness 4 / 6,5 cm

Part no 10-182
Length 61 cm
Height 6,5 cm
Width 18 cm
Weight 0,33 kg
Material Antistatic fabric, Foam, Slow recovery



Cushion for Armboard Flat

Injection molded Cushion with flat surface.

Suitable for 10-380, 10-385 and 10-387.

Part no 10-381
Length 61 cm
Height 3,5 cm
Width 16,5 cm
Weight 0,7 kg
Material Polyurethane Foam



Cushion for Armboard u-shaped

Injection molded Cushion, curved surface, for 10-380, 10-385 and 10-387.

Part no 10-382
Length 61 cm
Height 2,5 cm
Width 18 cm
Weight 0,8 kg
Material Polyurethane Foam



Strap for Armboard

Strap for armboard 10-380 and 10-387. Velcro fastening. Standard length 580mm , width 50mm.

Available in length 700mm, item nr 10-383-L.

Part no 10-383
Length 58 cm
Height 5 cm
Weight 0,034 kg
Material Polyester

ARM SURGERY TABLES

Reison offers a range of radiolucent arm surgery tables, in bakelite or carbon fiber. They are easy to apply on to the surgery table thanks to the hook on clamp. The arm surgery tables are also light in weight, easy to handle, clean and disinfect.





Arm & Hand Surgery Table

Arm and hand surgery table with twin clamps (hook on), height adjustable. Supporting leg included for (left or right mounting) depending on location of Surgeon or C-arm/ microscope. Cushion included.

Clamps for US & UK accessory rail available: 10-390-US, 10-390-UK.

Part no 10-390
 Length 81,5cm
 Height 70-115cm
 Width 52cm
 Weight 13kg
 Material Stainless steel, Aluminum, Bachelit, Glass fibre

Fastening rail (EUR): 10-390
 Fastening rail (US): 10-390-US
 Fastening rail (UK): 10-390-UK



Arm & Hand Surgery Table short

Arm and hand surgery table without supporting leg.

Surface dimensions: 340x600 mm.
 Clamps and cushion included.

Clamps for US & UK accessory rail available.

Part no 10-390-K
 Length 62,5cm
 Height 70-115cm
 Width 34cm
 Weight 6,7 kg
 Material Stainless steel, Aluminum, Bachelit, Glass fibre

Fastening rail (EUR): 10-390-K
 Fastening rail (US): 10-390-K-US
 Fastening rail (UK): 10-390-UK-K



Arm & Hand Surgery Table Carbon Fiber short

Lightweight Arm & Handsurgery table in Carbon Fibre with twin clamps (hook on). The plate also has excellent properties for fluoroscopy examination and due to the stiff plat, the table can be used without supporting leg. Cushion included.

Part no 10-396-K
 Length 62,5 cm
 Height 22cm
 Width 34 cm
 Weight 4,2 kg
 Material Stainless steel, Aluminum, Carbon fiber

Fastening rail (EUR): 10-396-K
 Fastening rail (US): 10-396-K-US
 Fastening rail (UK): 10-396-UK-K



Arm & Hand Surgery Table Carbon Fiber, extra long

This Arm & Hand surgery table is designed to fit several different operating tables. The table is made from carbon fiber laminate providing excellent x-ray fluoroscopy facilities.

The thin plate with cut-outs enables very good access for the surgeon. On the rear end there is an accessory rail, for infusion stand and anesthetic frame. Thickness of plate: 1,3 cm

Part no 10-398
 Length 137 cm
 Height 14 cm
 Width 52 cm
 Weight 5,1 kg
 Material Stainless steel, Aluminum, Carbon fiber

ARM SURGERY TABLES



Arm & Hand Surgery Table Carbon Fiber

Lightweight Arm & Handsurgery table in Carbon Fibre with twin clamps (hook on). One glassfibre supporting leg included for left or right mounting depending of location of surgeon or C-arm/microscope. Cushion included.

Many users are working without the supporting leg attached. Available with US and UK clamps: 10-396-US, 10-396-UK Antistatic cushion included.

Part no 10-396
Length 820mm
Height 720-1150 mm
Width 525 mm
Weight 5,6kg
Material Stainless steel, Aluminum, Carbon fiber, Glass fibre

Fastening rail (EUR): 10-396
Fastening rail (US): 10-396-US
Fastening rail (UK): 10-396-UK



Arm & hand surgery table (Part no: 10-396)

SURGICAL CLAMPS

Reison offers a wide range of surgical clamps, from the simplest screw clamps to advanced radial clamps. Our surgical clamps offers easy and smooth mounting and are all made to meet the European, US , UK and Australian rail standards.





Accessory Clamp

Standard 'hook-on' type clamp used for different Supports. Also available for UK and US siderail (10-301-UK, 10-301-US).

Part no 10-301
Length 90mm
Height 60mm
Width 40mm
Weight 0,3kg
Material Aluminium anodized

Fastening rail (EUR): 10-301
Fastening rail (US): 10-301-US
Fastening rail (UK): 10-301-UK



Accessory clamp, non rotatable

A fixed non-rotatable clamp for the EUR standard rail 25x10. Accessories with a post diameter from 16-20 mm can be held in this clamp.

Also available is a variant with flat pushing plunger for accessories with one or two flat surfaces on the post. The Clamp is called 10-302-P.

Part no 10-302
Length 11,5 cm
Weight 0,73 kg
Diameter: 5,5 cm
Material Stainless steel, Aluminum

Fastening rail (EUR): 10-302

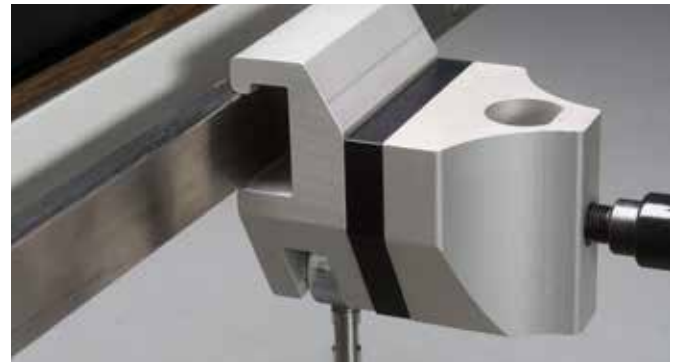


Clamp for Armboard without spacer

Spare Clamp for Reison Armboards. Compatible with old Reison Armboards as well.

Part no 10018
Length 12,5 cm
Height 16 cm
Width 6,5 cm
Weight 0,6 kg
Material Stainless steel, Aluminum

Fastening rail (EUR): 10018
Fastening rail (US): 10018-US
Fastening rail (UK): 10018-UK



Clamp for Armboard, 10mm spacer

Spare clamp for Reison Armboards (with 10 mm spacer). Compatible with old Reison Armboards as well.

Part no 10019
Length 14,5 cm
Height 16 cm
Width: 12,5 cm
Weight 0,6 kg
Material Stainless steel, Aluminum

Fastening rail (EUR): 10019
Fastening rail (US): 10019-US
Fastening rail (UK): 10019-UK



Clamp for Armboard, 30mm spacer

Spare clamp with 30 mm spacer.

Compatible with older Reison armboards as well.

Siderail options:
10019-S30-US, 10019-S30-UK

Part no 10019-S30
Length 14,5cm
Height 16cm
Width 6,5cm
Weight 0,65 kg
Material Stainless steel, Aluminum

Fastening rail (EUR): 10019-S30



Radial Clamp

Rotatable clamp for post diameter 16-20 mm.

Hook-on type for rail 25×10 mm (European standard).

For US/UK accessory side rails, see 10-308.

Part no 10-304
Length 12 cm
Height 16 cm
Width 5,5 cm
Weight 0,7 kg
Material Antistatic fabric, Foam, Slow recovery



Radial clamp hook-on

Reison Radial Clamp, hook-on type (25×10 mm European standard) For rod 16-20 mm.

Available for US siderail (10-305-US) and UK siderail (10-305-UK) as well.

Also available is a variant with flat pushing plunger for accessories with one or two flat surfaces on the post. The item is called 10-305-P.

Part no 10-305
Length 6 cm
Height 11,5 cm
Width 4,5 cm
Weight 0,8 kg
Material Stainless steel, Aluminum, Brass



Radial clamp mix

Reison´s popular radial clamp 10-307 ! (included in 10-387, 10-400, 10-310, 10-313 config.) The clamp can also be purchased as a separate item.

Hook on type with separate locking lever, rotatable! For post diameter 16-20 mm. The Clamp shall be used with lighter and shorter items that leans out of the table. (Do not use with leg holders)

Available for US and UK siderail: (10-307-US) (10-307-UK)

Part no 10-307
Length 125mm
Height 160mm
Width 65mm
Weight 1,1 kg
Material Stainless steel, Aluminum, Brass

Fastening rail (EUR): 10-307
Fastening rail (US): 10-307-US
Fastening rail (UK): 10-307-UK



Radial Clamp Universal

A universal rotatable clamp for 16–20 mm post.

Fits EU, US and UK accessory rail. 10-308/48 and 10-308-16

The UNI clamp 10-308 is now available with 48 cogs (std. 36 cogs)
10-308-16 Universal clamp for items with a 16mm post.

Part no	10-308
Length	12cm
Height	16 cm
Width	5,5 cm
Weight	0,7 kg
Material	Stainless steel, Aluminum, Brass



INSTRUMENT TABLES

The instrument tables from Reison are made to be adapted to the accessory rail of an operating table by means of a clamp. If you use a rotating clamp, the table plate always can be set horizontal if the operating table is tilted in trendelenburg or antitrendelenburg position.





Instrument Table

Tray dimensions: 500×400 mm.

Post diameter: 16 mm

Recommended Clamp:
10-301

Part no 10-060
Length 50 cm
Height 47 cm
Width 40 cm
Weight 2,9 kg
Material Stainless steel



Instrument Table rotatable

The table should be adapted to the operating table by means of a rotatable clamp. The plate is mounted to a link with two pivots making it turnable in different ways.

Thanks to the rotating clamp fitting, the table plate can always be set horizontal, if the operating table is tilted Trendelenburg or Antitrendelenburg position. If the operating table is side tilted it is not possible to set it horizontal.

Depth: 54 cm, Postdiameter 20 mm
Safe working load: 10 kg evenly applied

Part no 10-061
Length 54 cm
Height 73 cm
Width 40 cm
Weight 4,4 kg
Material Stainless steel



STRAPS AND FIXATION

Our straps are designed for both surgery tables and split leg surgery tables. They are designed to keep the legs or the body of a patient fixed to the operating table during surgical procedures. The range includes plain straps and soft padded for high patient comfort.



STRAPS AND FIXATION



Leg & Body Strap wide with hook

Leg Strap with "hook" and velcro locking. The leg strap 10-464 is designed to keep the legs or the body of a patient fixed to the operating table during surgical procedures. It is soft padded for high patient comfort.

Part no 10-464
Length 167 cm
Width 12,5 cm
Weight 0,3kg
Material Terylene. Stainless steel



Leg & Body Strap wide with velcro

Leg & Body strap, velcro fastening.

The strap is made to hold a patient safely on the operating table during a lot of different surgical treatments. It is softly padded for best comfort to the patient.

Part no 10-464-M
Length 241 cm
Width 12,5 cm
Weight 0,3 kg
Material Terylene



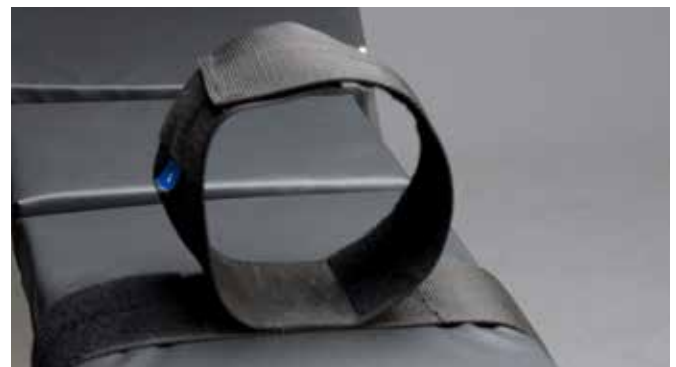
Leg Strap with clamps

Leg & Body strap with "hook on" clamps and easy locking.

Strap length 170cm
Upholstered length 54cm
Upholstered width 12cm
Clamp width 6cm

Available for US and UK rail:
10-373-US, 10-373-UK.

Part no 10-373
Length 170cm
Weight 1 kg
Material Polyester, Manchette fabric, aluminum, Stainless steel



Leg strap, pair

Leg Strap/pair for split leg section. Adjustable strap to meet different mattress thicknesses! Velcro fastening.

Length of the "loop" strap = 685 mm
NEW 10-468-L

The 10-468 is available in a longer strap for thicker legs, item 10-468-L.

Length of the "loop" strap = 800 mm

Part no 10-468
Length 102cm
Height 9cm
Width: 12,5 cm
Weight 0,8kg
Material Polyester



Leg/Body Strap 2 piece

Two piece Leg Strap, velcro fastening, designed to keep the legs of a patient fixed to the operating table during various surgical procedures.

Length: 850 mm:s (velcro part = 450 mm)
Width: 85 mm.

Part no 10-466
Length 150 cm
Height 9 cm
Weight 0,2 kg
Material Polyester, Stainless steel



Leg/Body Strap with velcro, 210cm

Leg and body strap with velcro fastening. The strap is designed to keep the patient fixed to the operating table during various surgical procedures.

It can be used as a supplement to other kind of supports if the operating table is tilted sideways.

Dimensions: 2100×85 mm.

Part no 10-465
Length 210cm
Width 8,5 cm
Weight 0,22 kg
Material Polyester



Legstrap with velcro 110cm padded

Comfort Leg strap with Velcro fastening.

The leg strap is designed to be used with split leg section when the leg of a patient shall be fixed to the leg section. It is softly padded for high comfort

The strap is also available in a longer version. Item nr 10465 See under supports and item 10-449.

Part no 10-467
Length 110 cm
Height 9 cm
Weight 0,1 kg
Material Polyester



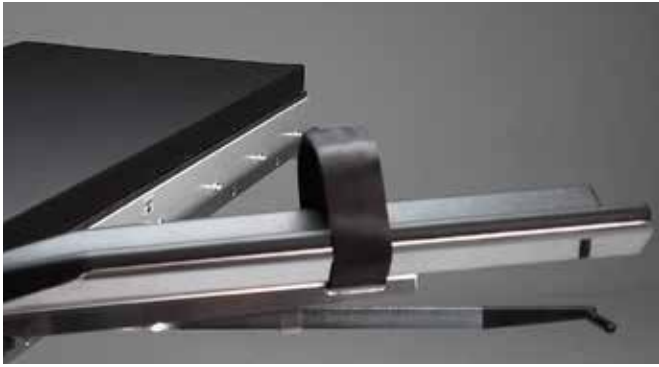
Wristlet with Strap

Wristlet with strap with Reison "hook on" clamp for easy mounting. Sold in pcs.

The wrist clamp is made for fixation of a under arm and hand of a patient during surgical treatment on an operating table.

It is also useable to keep the arm of the patient steady when a drip needle is put into the arm.

Part no 10-370
Length 6 cm
Height 7 cm
Width 5,5 cm
Weight 0,4 kg
Material Polyester, Aluminum, Stainless steel



Strap for Armboard

Strap for armboard 10-380 and 10-387.
Velcro fastening.
Standard length 580mm , width 50mm

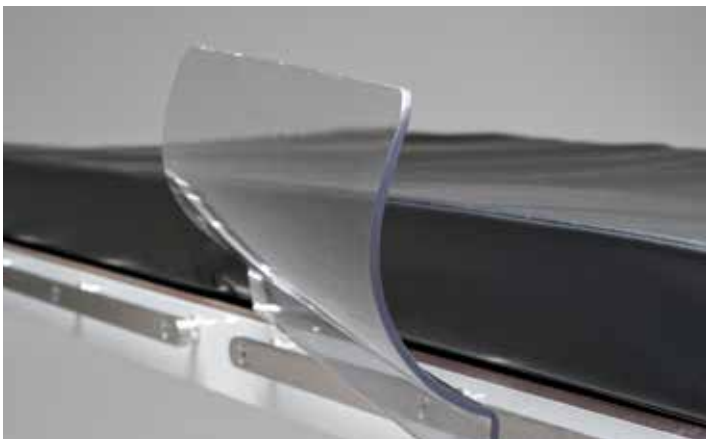
Now available in length 700mm, item nr 10-383-L.

Part no	10-10-383
Length	58 cm
Width	5 cm
Weight	0,034 kg
Material	Polyester



SUPPORTS

Reison offers a number of supports from head supports to arm and leg supports for different needs. The supports provides excellent fixation and maximum patient comfort.





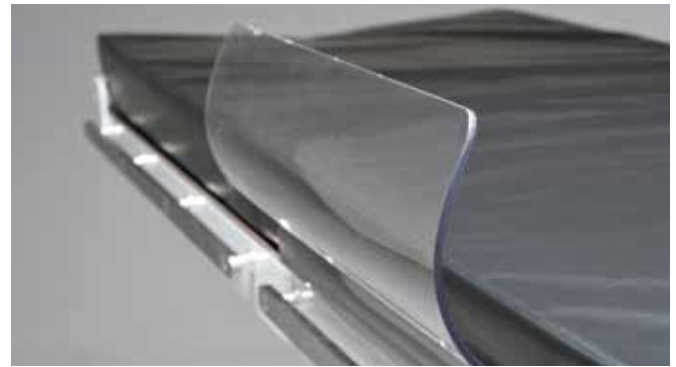
Angular Accessory Rail

Angular accessory rail (25×10 mm) with “hook on” clamp included (25×10 mm). This angular accessory rail is made to extend the normal rail on an operating table. Also, when a accessory have to be attached laterally or slanted out from the op.table, the angular accessory rail fits in.

It can be adjusted in height and the rail itself can be rotated all around and locks every 15°. See application (with Reison short arhtable 10-380-K)! Available with UK clamp&rail : 10-359-UK

Part no 10-359
 Height 33 cm
 Width 30 cm
 Weight 2,2kg
 Material Stainless steel, Aluminum

Fastening rail (EUR): 10-359
 Fastening rail (UK): 10-359-UK



Arm & Leg Guard, curved shape

The arm and leg guard is intended to give support and prevent the arm or leg of the patient from falling down outside the operating table.

For the patient the arm and leg guard is more comfortable than any wrist clamp and as an option there is a soft upholstered pad available. The product shall be pushed in under the mattress of the operating table, the weight of the patient will hold it in place.

Recommended Option: 10-553 Cover for Arm & Leg Guard in black PN material (see image #3).

Part no 10-552
 Length 565 mm
 Height 223 mm
 Width 223 mm
 Weight 1,4 kg
 Material PC High viscosity



Arm & Leg Guard, straight shape

The arm and leg guard is intended to give support and prevent the arm or leg of the patient from falling down outside the operating table.

For the patient the arm and leg guard is more comfortable than any wrist clamp and as an option there is a soft upholstered pad available. The product shall be pushed in under the mattress of the operating table, the weight of the patient will hold it in place.

Recommended option: 10-553, cover for Arm & Leg guard, straight shape.

Part no 10-554
 Length 40 cm
 Height 21 cm
 Width 20 cm
 Weight 1,25 kg
 Material PC High viscosity



Circular Head Cushion

Cushion for head fixation.
 Antistatic.

Part no 10-333
 Height 5 cm
 Weight 0,3 kg
 Material Polyurethane Foam



Circular Head Cushion for Children

Cushion for head fixation (for Children)

Antistatic.

Part no 10-333-PED
 Height 5 cm
 Weight 0,13 kg
 Material Polyurethane Foam
 Diameter outside 14,8, inside 7,7



Cover for Arm & Leg Guard

The Arm & Leg Guard cover is intended to be used together with the arm holder with curved shape part no. 10-552. The product serves to provide better comfort to the patient during long procedures. The pocket of the cover shall be pulled over the arm holder and be turned outwards to get the upholstery towards the patient.

Part no 10-553
 Length 57,5 cm
 Height 1,2 cm
 Width 20 cm
 Weight 0,18 kg
 Material Antistatic fabric, Foam, Slow recovery



Cover for Arm & Leg Guard, straight shape

Cover intended to be used together with arm holder 10-554 to get better comfort to the patient during long time operations.

The pocket of the cover shall be pulled over the arm holder and be turned outwards to get the upholstery towards the patient.

Part no 10-555
 Length 41cm
 Height 1,2 cm
 Width 20 cm
 Weight 0,15 kg
 Material Antistatic fabric, Foam, Slow recovery



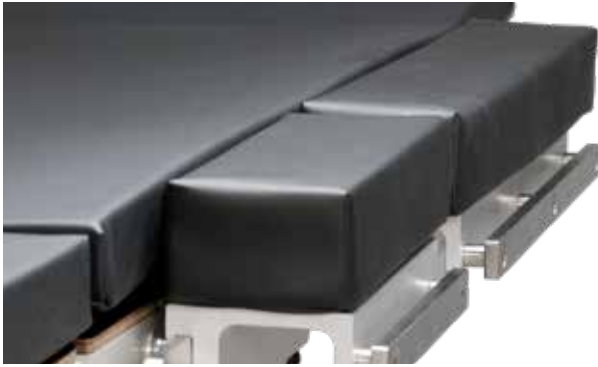
Elbow Support

The elbow support is intended to be a support for the elbows of the surgeon at such operations where a support is needed. To be mounted left or right on the side rail. Height adjustable with "hook on" clamp.

Available with US rail clamp: 10-366-US
 UK rail clamp: 10-366-UK

Part no 10-366
 Length 64cm
 Height 30 cm
 Width 20 cm
 Weight 3,5 kg
 Material Stainless steel, Aluminum, Antistatic fabric, Foam, Slow recovery

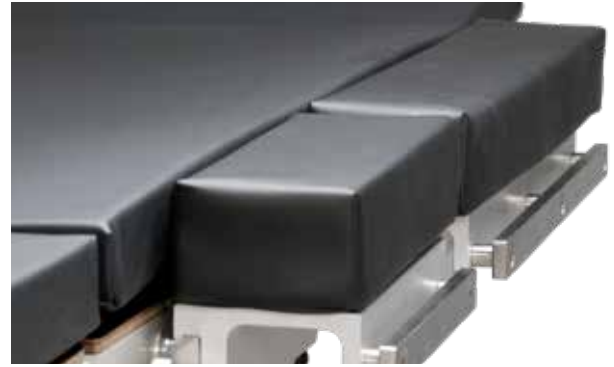
Fastening rail (EUR): 10-366
 Fastening rail (US): 10-366-US
 Fastening rail (UK): 10-366-UK



Widening Section 240 mm, pair

This widening section is used to widen the back and seat sections of the operating table to accommodate larger patients.

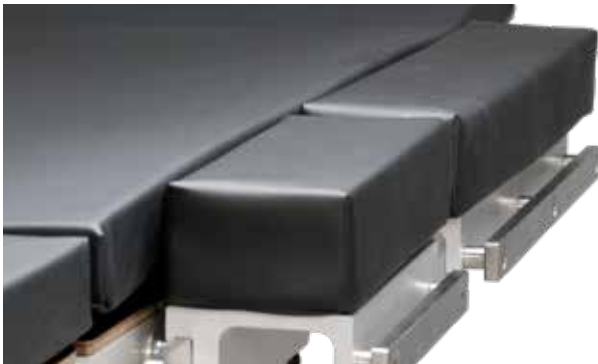
Part no 10-421 (with cushion)
 Part no 10-421-S (without cushion)
 Length 240 mm
 Height 85 mm
 Width 125 mm
 Weight 4,2 kg
 Material Stainless steel, Aluminium



Widening Section 300 mm, pair

This widening section is used to widen the back and seat sections of the operating table to accommodate larger patients.

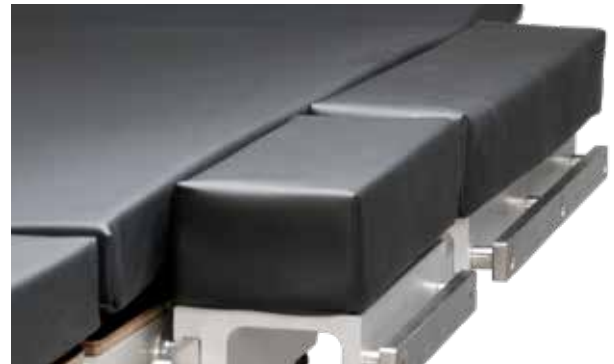
Part no 10-425 (With cushion)
 Part no 10-425-S (without cushion)
 Length 300 mm
 Height 85 mm
 Width 125 mm
 Weight 2,9 kg
 Material Stainless steel, Aluminium



Widening Section 445 mm, pair

This widening section is used to widen the back and seat sections of the operating table to accommodate larger patients.

Part no 10-422 (with cushion)
 Part no 10-422-S (Without cushion)
 Length 455 mm
 Height 85 mm
 Width 125 mm
 Weight 4,3 kg
 Material Stainless steel, Aluminum



Widening Section 500 mm, pair

This widening section is used to widen the back and seat sections of the operating table to accommodate larger patients.

Part no 10-423 (with cushion)
 Part no 10-423-S (without cushion)
 Length 500 mm
 Height 85 mm
 Width 125 mm
 Weight 4,9 kg
 Material Stainless steel, Aluminium



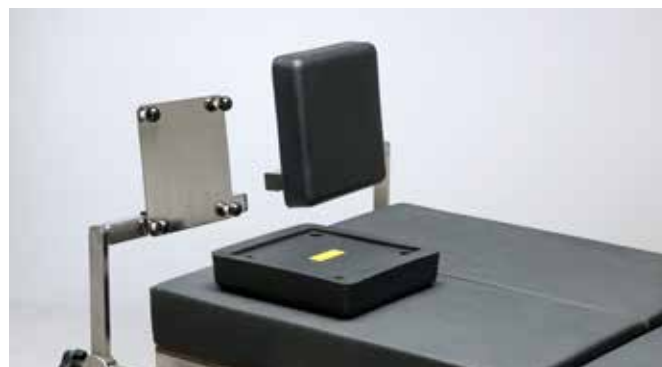
Flexible Head support

Multi adjustable head support for ENT-plastic and eye surgery. The head support can be set between 110° below horizontal and 50° over horizontal. It has a unique locking system, that locks both pivots only by means of one lever.

Standard fittings: Two pins diam. 15 mm C-C 106 mm.
Other fittings: (Mayfield 171.5 mm C-C), Maquet etc.
Available on request.

Part no 10-230-F
Length 42 cm
Height 9-22 cm
Width 29 cm
Weight 2,75 kg
Material Stainless steel, Polyurethane Foam

Fastening rail (EUR): 10-230,10-230-B,10-230-T



Foot Support

The foot support is intended to be used on split leg sections as well as on one piece leg section. The supports can be adjusted along the operating table to support patients of different length.

They can also be adjusted in height to fit different thicknesses of operating table pads and there is also a possibility to adjust the foot plates across the operating table, depending on how the patient shall be positioned.

Part no 10-296
Length 33cm
Height 32-44cm
Width 29cm
Weight 6kg
Material Stainless steel, Polyurethane Foam



Head rest

The Head support is made for all kind of ENT surgery. The head support can be set in any desired angel below and over horizontal.

It has double links and a unique locking system, which locks both pivots only by means of one lever.

Cushion is included.

Part no 10-237
Length 57cm
Height 9-35cm
Width 2,5cm
Weight 4,5kg
Material Stainless steel,Aluminum, Antistatic fabric, Foam, Slow recovery

Fastening rail (EUR): 10-237,-10-237-T



Head Support Bronchoscopy

The head rest is intended to be used at examination and treatment of the bronchus with use of a bronchoscope. And also at examination of esophagus, cardia and stomach.

It can be raised or lowered by means of a wheel on the right side of the gear box and the head plate can be angled upwards and downwards by means of a wheel at the rear end of the head plate. The head rest can also be angled sideways.

Max.angel downwards 50°
Max.angel upwards 20°
SWL 15kg

Part no 10-330
Length 51 cm
Height 41,5 cm
Width 22 cm
Weight 5,5kg
Material Stainless steel,Aluminum, Antistatic fabric, Foam, Slow recovery



Head Support Children

The Head support is made for all kind of ENT surgery on children. It can be set between 110° below horizontal and 50° over horizontal.

It has a unique locking system, which locks both pivots only by means of one lever. The holder fits a lot of operating tables and with adapters it fits most operating tables in the market. The head support cushion has a bowl shaped cavity to keep the head of the patient in a steady position during the treatment.

Part no	10-230-PED
Length	41 cm
Height	9,22 cm
Width	29 cm
Weight	2,75 kg
Material	Stainless steel,Aluminum, Antistatic fabric, Foam, Slow recovery



Head Support double joint

An universal head rest. The angel movement of the head plate is supported by a gas spring, which is released by a wide U-shaped release handle.

Angel upwards 20°
 Angel downwards 32°
 Cushion is included (part no. 11288).

Part no	10-234
Length	59cm
Height	8,5cm
Width	32,5cm
Weight	4,5kg
Material	Stainless steel,Aluminum, Antistatic fabric, Foam, Slow recovery

Fastening rail (EUR): 10-234,10-234-T



Head Support double link

The Head support is made for all kind of ENT surgery. It can be set in any desired angel below and over horizontal. It has double links and a unique locking system, that locks both pivots only by means of one lever.

It has a holder that fits a lot of operating tables and with adapters it fits most operating tables in the market. The head support cushion has a bowl shaped cavity to keep the head of the patient in a steady position during the treatment.

Part no	10-230-Mdbl
Length	58cm
Height	9,5-39cm
Width	29cm
Weight	5,5kg
Material	Stainless steel,Aluminum, Antistatic fabric, Foam, Slow recovery



Head Support prone

The Head support is made for all kind of surgery where the patient is lying face down. It can be set between 110° below horizontal and 45° over horizontal. It has a unique locking system, that locks both pivots only by means of one lever.

A lot of cushions will fit on the head plate. The head plate can also be raised horizontally. As an option the head rest can be used together with a non-slide mat, preventing the cushion from sliding

Adjustment angel downwards 110°
 Adjustment angel upwards 45°

Part no	10-231
Length	49,5cm
Height	3,5-17cm
Width	26cm
Weight	3,7kg
Material	Stainless steel,Aluminum, Antistatic fabric, Foam, Slow recovery

Fastening rail (EUR): 10-231, 10-231-T



Head support cushion

Head rest with soft-elastic foam core. Very durable and disinfectant-proof and 100% liquid-tight.

Patient-friendly surface, bio-compatible in accordance with ISO 10993-5. Recommended for Ap-images.

Part no 10-334
 Height 10 cm
 Width 24 cm
 Weight 0,6 kg
 Material Soft core, watertight material



Humerus Set

The humerus set can position the upper arm of a side lying patient and get a broken forearm in correct position for plastering. It should be used with a hand traction device which can hold the fingers in a fixed position. The arm support and the traction device shall be connected to the operating table by means of rotatable clamps.

Recommended clamps: 10-304 or 10-308
 Adjustment rough: 20 cm
 Adjustment smooth: 20 cm
 Adjustment angel hand traction: 40°
 Rotation hand traction: 360°

Part no 11443 & 11438
 Length 15 cm
 Height 82 cm
 Width 68 cm
 Weight 5,9 kg
 Material Stainless steel, Polyurethane Foam



Knee Arthroscopy Holder

Designed to keep a leg in a fixed position during surgery in the knee area. 3x Cushions included. Crank operated adjustment, height and angle can be adjusted.

Recommended clamps:
 10-304 or 10-305 .

Part no 10-353
 Length 46,5cm
 Height 26,5cm
 Width 13cm
 Weight 4,3 kg
 Material Stainless steel, Steel, Brass, Fabric

Fastening rail (EUR): 10-353
 Fastening rail (US): 10-353-US



Knee Arthroscopy Holder XL

The Knee holder is designed to keep a leg in a fixed position during surgery in the knee area. 10-353-XL is recommended for patients with a solid leg or during surgery that requires a cuff to keep the blood from flowing.

3x Cushions included. Crank operated adjustment, height and angle can be adjusted.

Height 34 cm
 Recommended clamps: 10-304 alt.10-305

Part no 10-353 XL
 Length 46,5cm
 Height 34cm
 Width 13cm
 Weight 4,4kg
 Material Stainless steel, Steel, Brass, Fabric



Lateral Armsupport

This arm support is intended to be a support for the upper arm of a side lying patient during surgical treatment. The arm support can be adjusted in several different positions for best possible comfort to the patient.

The support can be adjusted in height, it can be turned around horizontally and it can be slanted vertically 130° in both directions. Cushion and straps included.

Recommended clamps: 10-304 alt. 10-305

Part no 10-389
 Length 46 cm
 Height 63 cm
 Width 16 cm
 Weight 3 kg
 Material Stainless steel, Steel, Brass, Fabric



Lateral Support curved short

Lateral support, narrow with curved cushion 180x85mm, rotatable. The support can be rotated at the post and also the pad can be rotated.

Length of post = 350 mm
 Recommended clamp: 10-301

Part no 10-360
 Height 44 cm
 Width 33 cm
 Weight 2,1 kg
 Material Stainless steel, Steel, Fabric



Lateral Support curved wide

Lateral support, curved cushion 200x200 mm. The support can be adjusted in height, longitudinal and lateral, depending on how the patient shall be positioned.

Length of post: 350 mm.
 Recommended clamp: 10-301

Part no 10-365
 Length 23cm
 Height 4,5 cm
 Width 22 cm
 Weight 2,2kg
 Material Stainless steel, Steel, Fabric



Lateral Support narrow

Adjustable with 2 models of cushions included: 1 plane and 1 multifunctional curved cushion (see picture curved).

Length of post: 350 mm.
 Plate 175x70 mm.

Recommended Clamp: 10-301

Part no 10-566
 Length 8,5 cm
 Height 53 cm
 Width 2,5 cm
 Weight 1,8 kg
 Material Stainless steel, Steel, Polyurethane Foam



Lateral Support wide

2 models of cushions included: 1 plane and 1 multifunctional curved integral foam cushion, 4 different positions to meet the patients curvature(see picture).

Length of post: 350 mm.
Plate 165×165 mm.

Recommended Clamp: 10-301

Part no 10-565
Length 23 cm
Height 53 cm
Width 20,5cm
Weight 2,5 kg
Material Stainless steel, Steel, Polyurethane Foam



Leg Holders with Ball Joint

Leg holders with integral foam cushions. 20 mm post diameter.

Post diam. 18 available (10-450-18)
Recommended Clamps: 10-304 or 10-305.
Option: Strap 10-452

Part no 10-450
Length 350mm
Height 760mm
Width 195mm
Weight 4 kg
Material Stainless steel, Steel, Polyurethane Foam



Leg Holders with Ball Joint (18 mm)

Leg holders with integral foam cushions. 18 mm post diameter.

Recommended Clamps: 10-304 or 10-305.
Option: Strap (10-452)

Part no 10-450-18
Length 350 mm
Height 760 mm
Width 195 mm
Weight 4 kg
Material Stainless steel, Steel, Polyurethane Foam



Leg Holders XL

For Bariatric surgery. Medisoft filling for highest comfort. Sold in pairs.

Rod diameter 20 mm.
Available with rod diameter 18 mm (10-449-18).
Cushion measure : 300x300x140mm Strap measure : 1300x85mm
Suitable clamps
Recommended clamps: 10-304 or 10-305

Part no 10-449
Length 350 mm
Height 800 mm
Width 280 mm
Weight 4,2 kg
Material Stainless steel, Steel, Polyurethane Foam



Neuro Head Support

The head support is designed for neurosurgery treatment. It has several adjustment possibilities, making it possible to put the head of the patient in any desired position.

Its standard fitting is made to fit the most common operating tables and with "tailor made" adaptor it fits any operating table.

Part no	10-335
Length	43 cm
Height	70 cm
Width	20 cm
Weight	3,5 kg
Material	Stainless steel, Steel, Fabric



Padded Strap

Comfort Strap for 10-450 Leg Holders, velcro fastening.

Soft padded for high comfort to the patient.

Sold in pcs.

Part no	10-452
Length	87 cm
Width	8,5 cm
Weight	0,08 kg
Material	Antistatic fabric, Foam, Slow recovery



Pubis Support

The pubis support is intended to be used when the patient is in a side-lying position. It can be adjusted in height and across the operating table.

The supporting pad can be set in different angles by means of two gear rim to get the supporting pad at desired place. The pad is molded in soft polyurethane.

Recommended clamps; 10-304 alt. 10-305

Part no	10-567
Length	32cm
Height	45,5 cm
Width	10,5 cm
Weight	2,2 kg
Material	Stainless steel, Steel, Polyurethane Foam



Rotatable Lateral support narrow

Adjustable with 2 models of cushions included: 1 plane and 1 multifunctional curved cushion (see picture curved).

Length of post = 350 mm
Plate = 175x70 mm
Recommended Clamp: 10-301

Can be used as Shoulder Supports (2 pcs needed)!

Part no	10-560
Length	32 cm
Height	57 cm
Width	8 cm
Weight	2,2 kg
Material	Stainless steel, Steel, Polyurethane Foam



Rotatable Lateral support wide

Adjustable with 2 models of cushions included: 1 plane and 1 multifunctional curved cushion (see picture). Curved cushion can be turned 4x90 degrees to meet patients curvature.

Length of post = 350 mm
Plate = 165x165 mm.

Recommended Clamp: 10-301

Part no 10-561
Length 20,5cm
Height 56 cm
Width 34 cm
Weight 3 kg
Material Stainless steel, Steel, Polyurethane Foam



Safety Side Rails square, pairs

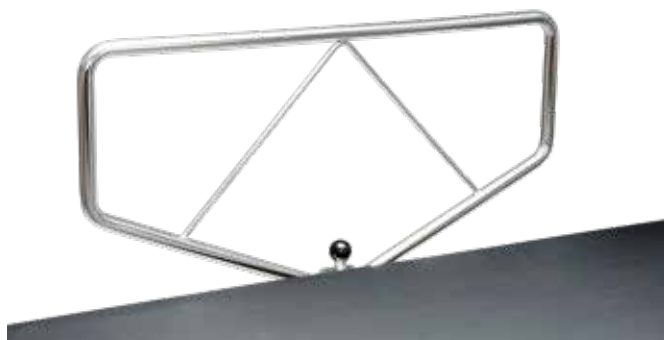
The Safety side rails are designed for supporting a patient on an operating/treatment table or trolley. They can easily be folded down and when folded to upright position they lock automatically.

Length: 616 mm
Height (without the clamp part): 363 mm.

Sold in pairs. Available with Euro & UK clamp as well.

Option: Safety Cover, 10-530-H (sold in pcs)

Part no 10-530
Length 630 mm
Height 370 mm
Width 40 mm
Weight 2,8 kg
Material Stainless steel, Aluminum



Safety Side Rails, pairs

Safety side rails are designed for supporting a patient on an operating/treatment table or trolley. They can easily be folded down and when folded to upright position they locks automatic.

Length: 616 mm
Height (without the clamp part): 289 mm

Made in stainless steel, sold in pairs.
Available for UK & US side rail.
Option: Safety Cover, 10-531-H (sold in pcs)

Part no 10-531
Length 930mm
Height 370mm
Width 40mm
Weight 2,1 kg
Material Stainless steel, Aluminium



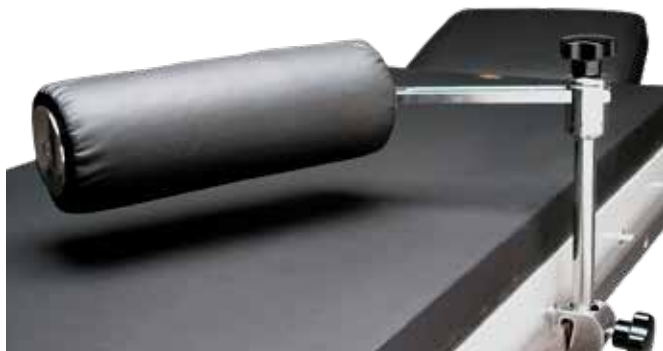
Shoulder Supports

Shoulder supports, pair. The shoulder supports are made to support the shoulders of a patient when the operating table is put into Trendelenburg (head down) position.

Two types of cushions included (see pictures), concave and plane. The concave one can easily be turned 180°, depending on how the patient shall be supported

Recommended clamps: 10-301

Part no 10-350
Height 38,5 cm
Width 23 cm
Weight 3,8 kg
Material Stainless steel, Steel, Polyurethane Foam



Supporting Cushion Horizontal

The horizontal support can be adjusted to various angles by means of a gear device.

Diameter: 135 mm
 Length: 270 mm
 Length of post: 350 mm

Recommended clamp: 10-301

Part no 10-369
 Length 45 cm
 Height 50 cm
 Width 2,5 cm
 Weight 3,2 kg
 Material Stainless steel, Steel, Polyurethane Foam



Supporting Cushion Vertical

Vertical (upright) support. The lateral support can also be adjusted to various angles by means of a gear device.

Diameter: 135 mm
 Length: 270 mm
 Length of post: 350 mm
 Recommended clamp: 10-301

Part no 10-368
 Length 25 cm
 Height 50 cm
 Width 13,5 cm
 Weight 1,9 kg
 Material Stainless steel, Steel, Polyurethane Foam



Supporting Frame

The supporting frame is intended to be used together with surgical retractors to keep an operating cavity open for better access to the surgeon.

Clamp 10-304 included.

It has several positioning possibilities, which make the surgical retractors work the best way.

Part no 10-410
 Length 60cm
 Height min 57cm max 85cm
 Width 8,5cm
 Weight 4,1kg
 Material Stainless steel, Aluminum



Thigh Holder

The thigh support is designed for fixation and support of the upper leg of a patient at an operating table.

The support has an adjustable pad for different patient positions. Sold in pcs.

Maximum height 550 mm
 Recommended clamp: 10-301

Part no 10-448
 Height 550 mm
 Width 375 mm
 Weight 1,8 kg
 Material Stainless steel, Steel, Antistatic fabric, Foam



Tibia Support

The Tibia Support is designed to support the knee or the foot of a patient during knee or leg surgery.

Cushion

Diameter 135 mm
Length 270 mm

Post: Total length 770 mm
Recommended clamps: 10-304-P or 10-305-P

Part no 10-367
Height 82 cm
Width 30 cm
Weight 2,45 kg
Material Stainless steel, Steel, Polyurethane Foam



Tibia Support Short

The Tibia Support is designed to support the knee or the foot of a patient during knee or leg surgery.

Cushion

Diameter 135 mm
Length 270 mm

Post: Total length 400 mm

Recommended clamps: 10-304 or 10-305-P

Part no 10-367-K
Height 40 cm
Width 30 cm
Weight 2,4 kg
Material Stainless steel, Steel, Polyurethane Foam



Weinberger Hand Fixation

The Weinberger hand fixation is intended to be used to fixate the hand of the patient when the fore arm has to be stretched out by means of a traction device.

It can also be used with Reison Humerus set 11443+11438.

Part no 10-393
Length 22 cm
Width 19 cm
Weight 0,7 kg
Material Stainless steel, PC High viscosity

MISCELLANEOUS ACCESSORIES

Surgical accessories from Reison provide surgical teams increased productivity and ideal surgical site access while also promoting patient safety.





Transport Handles with ball joint

Transport handles/pair, supposed to be attached to the 25×10 mm accessory side rail.

10-457-UK for UK accessory rail.

Part no 10-457
 Length 11 cm
 Height 27 cm
 Width 5 cm
 Weight 1,1 kg
 Material Stainless steel



Transport Handles, extra long

The transport handle is intended to be fixed to the back section of an operating table when the operating table is to be moved with or without patient.

The idea is to avoid moving the table using the head rest as transport handle.

The transport handles shall be hooked from the upper side of the accessory rail of the back section and be locked by tightening the locking handles.

Part no 10-458
 Length 40 cm
 Height 15 cm
 Width 4 cm
 Weight 2,8 kg
 Material Stainless steel



Transport Handles, facing downwards

Transport handles/pair, facing downwards, supposed to be attached to 25×10 mm accessory siderail.

Part no 10-455
 Length 27cm
 Height 14 cm
 Width 7,5 cm
 Weight 1,9 kg
 Material Stainless steel



Transport Handles, facing upwards

Transport handles/pair, facing upwards, supposed to be attached to the 25×10 mm accessory side rail.

Part no 10-456
 Length 16 cm
 Height 22 cm
 Width 8 cm
 Weight 1,9 kg
 Material Stainless steel



Anesthesia Frame Carbon Fibre

Light weight Anesthesia frame in Carbon fibre with extension arms included. Telescopic with clamp, 10-307. The inner part of the lower extension arm is shaped as a carrying handle for transportation.

Swivelling extension arms kept in place by friction. Telescopic height adjustable.

Part no 10-313 (For UK and US rail, 10-313-UK,10-313-US.)
 Length 160 cm
 Height min 52cm max 87cm
 Weight 2,6 kg
 Material Carbon fiber, Stainless steel, Aluminum, Brass

Fastening rail (EUR): 10-313
 Fastening rail (US): 10-313-US
 Fastening rail (UK): 10-313-UK



Anesthesia Frame flexible with clamps

Anesthesia frame, flexible including 'Hook on clamp' (25×10 mm). The standard length including the pins is 180cm (can also be made in 140 cm) 10-311-US (US clamp) 10-311-UK (UK clamp).

Part no 10-311
 Length 180 cm
 Weight 3 kg

Fastening rail (EUR): 10-311
 Fastening rail (US): 10-311-US
 Fastening rail (UK): 10-311-UK



Anesthesia Frame flexible without clamps

Flexible Anesthesia frame without any clamps. Diameter of fittings (for clamp) is 16 mm. 10-311-16 length = 140 cm (pins excl.) Pins 30 cm, which make the frame adjustable from 140–190 cm.

Recommended Clamps: 10-301

Part no 10-311-16
 Length 200cm
 Weight 2,3 kg



Anesthesia Screen

Anesthesia Screen, telescopic with a rotatable 'hook on' clamp 10-307. Extension arms 10-315 is optional. Clamp for US (10-310-US) and UK (10-310-UK) accessory siderail is also available.

Part no 10-310
 Length 600 mm
 Height min 530mm max 780mm
 Width 55 mm
 Weight 2,1 kg
 Material Stainless steel, Aluminum, Brass

Fastening rail (EUR): 10-310



Extension Arm

Extension Arm(s) for Anesthesia Frame 10-310.

Sold in pcs.

Part no 10-315
 Length 54 cm
 Height 5 cm
 Width 2,5 cm
 Weight 0,4 kg
 Material Stainless steel, plastic



Extension Rail

Extension rail 25×10 mm, sold in pairs. The extension rails can be attached to EUR, UK or US accessory rail.

Rail length = 225 mm

Part no 10-491
 Length 28 cm
 Height 9 cm
 Width 4 cm
 Weight 2,1 kg
 Material Steel, Stainless steel

Fastening rail (EUR): 10-491
 Fastening rail (US): 10-491-UK



Extension Rail long

Extension rail 25×10 mm, sold in pairs. The extension rails can be attached to EUR, UK or US accessory rail.

Rail length = 500 mm

Part no 10-491-L
 Length 50 cm
 Height 9 cm
 Width 4 cm
 Weight 2,1 kg
 Material Steel, Stainless steel



Hernia Bridge

Hernia bridge with crank operated elevation. Adjustable width (490-550 mm) to fit various Operating Tables.

The Hernia bridge is in the same performance as the Kidney elevator, with a difference in the plate.

Cushions are included.

Part no 10-485
 Length 55 cm
 Height 15-27 cm
 Width 57 cm
 Weight 7,7 kg
 Material Stainless steel, Steel, Antistatic Foam.



Infusion Stand

One hand operated release and locking. "Hook on" clamp 10-307 included. Available with US and UK clamp: 10-402-US, 10-402-UK.

Part no 10-402
Height 94,5-149 cm
Width 6,5 cm
Weight 2,4 kg
Material Stainelss steel, Plastic

Fastening rail (EUR): 10-402
Fastening rail (US): 10-402-US
Fastening rail (UK): 10-402-UK



Infusion Stand Rotatable Clamp

Infusion stand with Reison rotatable "hook on" clamp 10-307, with easy locking!

Available with
US clamp 10-400-US.
UK clamp 10-400-UK.

Part no 10-400
Height 105-155cm
Width 24 cm
Weight 2,45 kg
Material Stainless steel, Aluminum, Brass

Fastening rail (EUR): 10-400
Fastening rail (US): 10-400-US
Fastening rail (UK): 10-400-UK



Infusion Stand upright

Infusion stand, up right with "hook on" clamp.

Available with:
US clamp: 10-401-US
UK clamp: 10-401-UK

Part no 10-401
Height 105-155cm
Width 24 cm
Weight 2 kg
Material Stainless steel, Alunimum

Fastening rail (EUR): 10-401
Fastening rail (US): 10-401-US
Fastening rail (UK): 10-401-UK



Kidney elevator

Back & Kidney elevator with crank operated elevation.

Adjustable width (490-550 mm) to fit various Operating Tables.

Part no 10-480
Height min 8cm max19cm
Width min 50,5cm max 56,5cm
Weight 7,4 kg
Material Stainless steel, Steel, PP Copolymer



Proctology attachment

The proctology attachment is made to support a kneeling patient for surgical treatment in the patient's backbone.

The lower support is for the knees, the upper support is for the abdomen, and the chest will be resting on the operating table.

Part no 11233
 Length 37 cm
 Height 49-69 cm
 Width 50 cm
 Weight 16 kg
 Material Stainless steel, Aluminum, Antistatic fabric, Foam, Slow recovery



Robot Shield

The Robot shield is intended to protect the head of the patient against collisions with the arm of the robot.

In the horizontal plane the shield can be positioned in desired angle by means of a gear pivot in steps of 10°.

Part no 10-316
 Length 35cm
 Height 66 cm
 Width 6,5 cm
 Weight 4,8 kg
 Material Stainless steel, PC High viscosity



Surgeon's Step

The surgeon's step is intended to be used for better access in the operation area.

Standard measure 60x40x12 cm.

The surgeon's step is made from stainless steel and have a non-slip area to stand on.

Part no 10-001
 Length 60cm
 Height 10-20 cm
 Width 40 cm
 Weight 6,75-7,5kg
 Material Stainless steel



Tonsil Frame

The tonsil frame is made for keeping the patients mouth open during tonsil surgery by means of a hook in the lower jaw of the patient and another hook on the frame.

Reison's popular 10-307 clamp is included in the frame.

Part no 10-314
 Height 56 cm
 Width 56,5cm
 Weight 3,5 cm
 Material Stainless steel, Aluminum



NOVID
SURGICAL

Articulated Arms for Healthcare

Novid Surgical, LLC
27 Siemon Company
Drive, Suite 104W
Watertown, CT 06795
Phone (860) 274-5900
Fax (860) 274-5906
info@novidsurgical.com,
www.novidsurgical.com